

Seismic Impact Analysis of Infill and Without Infill Walls in Multi-Story Buildings

Vikesh Kumar Mewada
M.Tech Scholar
Department of Civil Engineering
AISECT
Bhopal, M.P, India

Dr. Ajay Swarup
Associate Professor
Department of Civil Engineering
AISECT
Bhopal, M.P, India

Abstract- The present study attempts to estimate typical variations in magnification factor of a mid rise open ground storey building accounting for the variability of compressive strength and modulus of elasticity of infill walls with various infill arrangements so that it can help designers facing trouble with heavy designs for a structure of mid-size, with the given material properties, geometry and loadings in particular. For the present study Equivalent static analysis (ESA) and Response spectrum analysis (RSA) is considered for the comparative study. The building will be analyzed for two different cases: i) Considering infill mass but without considering infill stiffness. ii) Considering both infill mass and infill stiffness. From the present results it is found that building with soft storey will exhibit poor performance during a strong shaking. But the open ground storey is an important functional requirement of almost all the urban multi-storey buildings and hence cannot be eliminated. Alternative measures need to be adopted for this specific situation. The under-lying principle of any solution to this problem is in i) increasing the stiffness of the ground storey; ii) provide adequate lateral strength in the ground storey. The possible schemes to avoid the vulnerability of open ground storey buildings under earthquake forces can be by providing stiff columns in open ground storey buildings or by providing adjacent infill walls at each corner of soft ground storey buildings.

Keywords— Soft storey structure; Seismic Impact Analysis; Infill; OSG building; Equivalent static analysis (ESA); Response spectrum analysis (RSA);

I. INTRODUCTION

Reinforced concrete frame buildings have become common form of construction with masonry infills in urban and semi urban areas in the world. The term infilled frame denotes a composite structure formed by the combination of a moment resisting plane frame and infill walls. The infill masonry may be of brick, concrete blocks, or stones. Ideally in present time the reinforced concrete frame is filled with bricks as non-structural wall for partition of rooms because of its advantages such as durability, thermal insulation, cost and simple construction technique. There is significant advantage of this type of buildings functionally but from seismic performance point of view such buildings are considered to have increased vulnerability. In the current practice of structural design in India infill walls are considered as non-structural elements and their strength and stiffness contribution are neglected. The effect of infill panels on the response of reinforced concrete frames subjected to seismic

action is widely recognized and has been subject of numerous experimental and analytical investigations over last five decades. Covers a huge analysis area since every a part of the system has its own technical complexity. The open ground storey framed building behaves differently as compared to a bare framed building (without any infill) or a fully infilled framed building under lateral load. A bare frame is much less stiffer than a fully infilled frame; it resists the applied lateral load through frame action and shows well-distributed plastic hinges at failure. When this frame is fully infilled, truss action is introduced thus changing the lateral load transfer mechanism. A fully infilled frame shows lesser inter-storey drift, although it attracts higher base shear (due to increased stiffness). A fully infilled frame yields lesser force in the frame elements and dissipates greater energy through infill walls. The structural implications like strength and stiffness of infill walls in infilled frame buildings are ignored in the structural modelling in conventional design practice. The design in such cases will generally be conservative in the case of fully infilled framed building. But things will be not be the same for an open ground storey framed building. Open ground storey building is slightly stiffer than the bare frame, has larger drift (especially in the ground storey), and fails due to soft storey-mechanism at the ground floor as shown in Fig. 1. Therefore, it may not be conservative to ignore strength and stiffness of infill wall while designing open ground storey buildings. Performance of buildings in the past earthquakes clearly shows that the presence of infill walls has significant structural implications on them. Therefore, we cannot simply neglect the structural contribution of infill walls particularly in seismic regions where, the frame-infill interaction may cause significant changes in both stiffness and strength of the frame. Inclusion of stiffness and strength of infill walls in the open ground storey building frames decreases the fundamental time period compared to a bare frame and consequently increases the base shear demand and the design forces in the ground storey beams and columns. This increased design forces in the ground storey beams and columns of the open ground storey buildings are not captured in the conventional bare frame analysis. An appropriate way to analyse the open

ground storey buildings is to model the strength and stiffness of infill walls. Unfortunately, no guidelines are given in IS 1893: 2002 (Part-1) for modelling the infill walls. As an alternative a bare frame analysis is generally used that ignores the strength and stiffness of the infill walls. The aim of this thesis is to check the applicability of the multiplication factor of 2.5 in the ground storey beams and columns for the model considered in particular, when it is to be designed as open ground storey framed building taking into account the effect of stiffness of the walls also and to study the effect of infill strength and stiffness in the seismic analysis of a mid rise open ground storey building.



Fig. 1: Examples of failure of buildings with soft storey at ground floor

II. OVERVIEW OF WORK

The salient objectives of the present study have been identified as follows:

1. To study the effect of infill strength and stiffness in the seismic analysis of open ground storey (OGS) buildings.
2. To check the applicability of the multiplication factor of 2.5 as given in the Indian Standard IS 1893:2002 for design of mid rise open ground storey building.
3. To assess the effect of varying the infill arrangements on the analysis results by taking various combinations of infill thickness, strength, modulus of elasticity and openings.

III. NEED FOR THE PROPOSED WORK

The presence of infill walls in upper storeys of open ground storey (OGS) buildings accounts for the following issues:

- i) Increases the lateral stiffness of the building frame.
- ii) Decreases the natural period of vibration.
- iii) Increases the base shear.
- iv) Increases the shear forces and bending moments in the ground storey columns.

IV. LITERATURE REVIEW

Inclusion of stiffness and strength of infill walls in the open ground storey building frames decreases the fundamental

time period compared to a bare frame and consequently increases the base shear demand and the design forces in the ground storey beams and columns. This increased design forces in the ground storey beams and columns of the open ground storey buildings are not captured in the conventional bare frame analysis. An appropriate way to analyze the open ground storey buildings is to model the strength and stiffness of infill walls. Unfortunately, no guidelines are given in IS 1893: 2002 (Part-1) [1] for modelling the infill walls. In Infill thickness, strength, modulus of elasticity and openings are analyzed by two methods mentioned above. The modelling and analysis for the study is done with the aid of commercial software ETABS v 9.7.1[2] in compliance with the codes IS 456-2000[3] and IS 1893-2002. In existing systems, third party auditor demanding local copy of user outsourced data. So this will increase the possibility of the following research papers are consulted for obtaining an in-depth understanding of various aspects of the project. Different types of analytical models based on the physical understanding of the overall behaviour of an infill panels were developed over the years to simulate the behaviour of in filled frames. The elastic analysis based (Smith and Carter, 1969)[4], the plastic analysis based (Liauw and Kwan, 1983)[5], and the ultimate load based (Saneinejad and Hobbs, 1995)[6] approaches are among them. This methods aim at calculating the geometric properties and strength of an equivalent strut.

Asokan (2006) studied how the presence of masonry infill walls in the frames of a building changes the lateral stiffness and strength of the structure. This research proposed a plastic hinge model for infill wall to be used in nonlinear performance based analysis of a building and concludes that the ultimate load (UL) approach along with the proposed hinge property provides a better estimate of the inelastic drift of the building[7]. D Menon et. al. (2008) concluded that the MF increases with the height of the building, primarily due to the higher shift in the time period. Also when large openings are present and thickness of infills is less, there is a reduction in MF. The study proposed a multiplication factor ranging from 1.04 to 2.39 as the number of storey increases from four to seven[8]. J. Dorji and D.P. Thambiratnam(2009) concluded that the strength of infill in terms of its Young's Modulus (E) has a significant influence on the global performance of the structure. The stresses in the infill wall decrease with increase in (E) values due to increase in stiffness of the model. The stresses varies with building heights for a given E and seismic hazard[9] Sattar and Abbie (2010) in their study concluded that the pushover analysis showed an increase in initial stiffness, strength, and energy dissipation of the in filled frame, compared to the bare frame, despite the wall's brittle failure modes. Likewise, dynamic analysis results indicated that fully-infilled frame has the

lowest collapse risk and the bare frames were found to be the most vulnerable to earthquake-induced collapse. The better collapse performance of fully-infilled frames was associated with the larger strength and energy dissipation of the system, associated with the added walls[10]. Dukuze (2000) investigated the failure modes of infilled structure on single storey specimens with and without opening. In general, three types of failures were observed under an in plane load such as sliding of bed joints, tensile cracking of infill and local crushing of compressive corners at the loaded corner. The specimen with opening at the centre of panel had suffered shear cracks at the point of contact and severe damages on the lintel beam. The contact length between the infill panel and frame had increased by increasing the stiffness of the confining frame. However, when the aspect ratio (H/L) was increased, the crack pattern spread throughout the panel and the column fails in shear and bending. The failure of fully infilled specimen was dominated with the diagonal cracking along with shear slip along mortar joints. Although, failure occurred at the loaded corners in most cases, the specimen which had strong column, failure occurred mostly near the beam in the loaded corner and conversely failure concentrate near the loaded region of column when their beam is stronger than the column[11]. Kaushik (2006) conducted a comparative study of the seismic codes especially on the design of infilled framed structures. The study revealed that the most of the modern seismic codes lack the important information required for the design of such buildings. Moreover, the relevant clauses of codes are not consistent and vary from country to country. Such variations were attributed to the absence of adequate research information on important structural parameters as determination of natural period of vibration of infilled structures, soft storey phenomenon associated with the presence of infill, exclusion of strength and stiffness of infill and considerations of openings. The main reason of not considering the beneficial effects of the infill is due to variation in material property as well as brittle nature of failure[12]. Fardis (1996) investigated the seismic response of an infilled frame which had weak frames with strong infill material. It was found that the strong infill which was considered as non structural is responsible for earthquake resistance of weak reinforced concrete frames. However, since the behaviour of infill is unpredictable, with the likelihood of failing in brittle manner, it was recommended to treat infill as non-structural component by isolating it from frames. On the contrary, since infill is extensively used, it would be cost effective if positive effects of infill is utilized[13]. Dominguez (2000) studied the effects of non-structural component on the fundamental period of buildings. The model consists of five storeys, ten storeys and fifteen storeys with diagonal struts as the infill (non-structural component). It was reported that the

presence of infill decreases the fundamental period of the structure. When the models was provided with 100mm thick infill, the fundamental period was decreased by 46%, 40% and 34% for five storey, ten storeys and fifteen storeys. When the infill thickness was 200mm, the fundamental period was 53%, 44% and 36% respectively. The trend of decrease in period with increase in thickness is decreasing with the increase in height. However, the effect of thickness is not significant. The effect of masonry strength was reported to be insignificant on the fundamental period of the structure as the difference between 2 models which had 8.6MPa and 15.2MPa was 10.4%. The significant difference was observed by increasing the number of bays. When the number of bays was increased to 2, the difference in fundamental period was 15% [14].

V. DESCRIPTION OF STRUCTURAL MODEL

The description of the structure and other important parameters are given below :

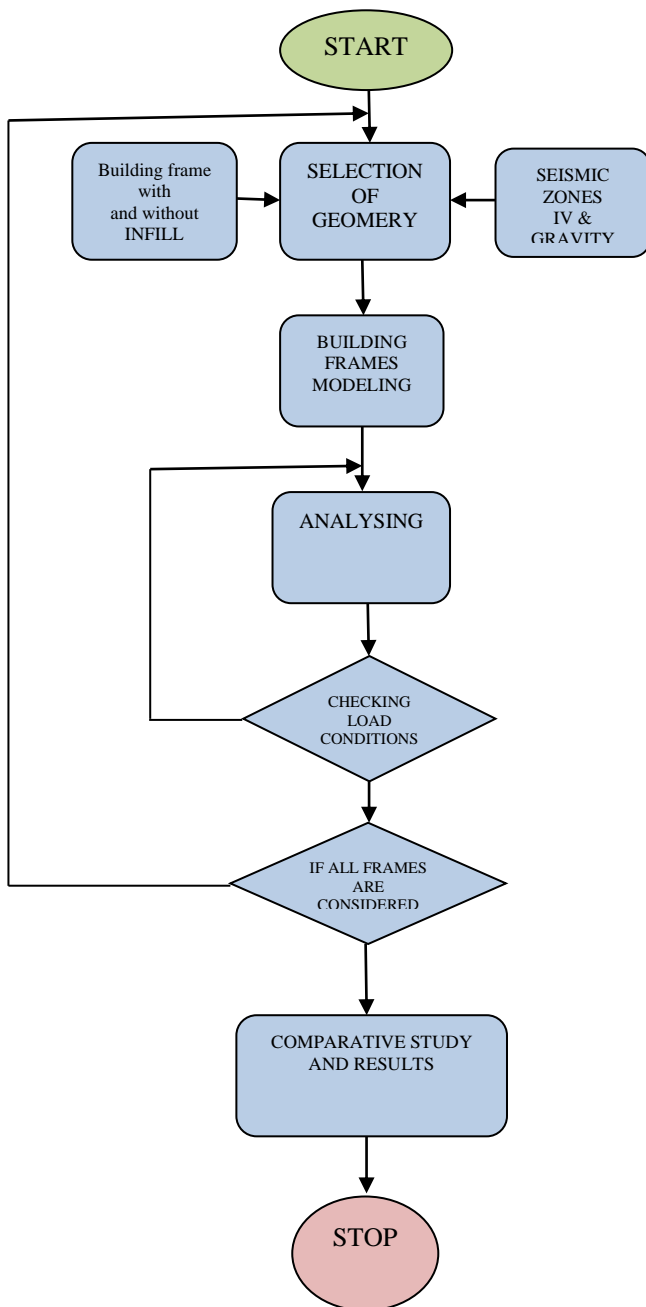
Geometry: The building has five bays in X direction and four bays in Y direction with the plan dimension 22.5 m × 14.4 m and a storey height of 3.5 m each in all the floors and depth of foundation taken as 1.5 m.

Material properties: M-25 grade of concrete and Fe-415 grade of reinforcing steel are used for all the frame models, The unit weights of concrete and masonry are taken as 25.0 kN/m³ and 20.0 kN/m³, The poisson ratio of concrete is 0.2 and of masonry is 0.15.

Table 1: Details of Structure

Type of structure	Residential building (G+5)
Plan dimensions	22.5 m X 14.4 m
Total height of building	21m
Height of each storey	3.5m
Depth of foundation	1.5m
Bay width in longitudinal direction	4.5m
Bay width in transverse direction	3.6m
Size of beams	230 mm X 400 mm
Size of columns	400 mm X 400 mm
Thickness of slab	125mm
Thickness of walls	230 mm & 115 mm
Seismic zone	IV
Soil condition	Medium (type II)
Response reduction factor	5
Importance factor	1
Floor finishes	1 kN/m ²
Live load at roof level	1.5 kN/m ²
Live load at all floors	3 kN/m ²
Grade of Concrete	M25
Grade of Steel	Fe 415
Density of Concrete	25 kN/m ³
Density of brick masonry	20 kN/m ³

VI. WORKING FLOW CHART



VII. RESULT

Effect of infill on lateral Displacement and rotation of roof nodes is depicted in table below. The displacement and rotation of roof nodes are found to be negligible in both the cases.

Node number	Without Infill			With Infill			Ratio		
	Ux ₁ mm	Ry ₁ rad	Rz ₁ rad	Ux ₂ mm	Ry ₂ rad	Rz ₂ rad	Ux ₂ /Ux ₁	Ry ₂ /Ry ₁	Rz ₂ /Rz ₁
26	0.05	0	0	-0.09	0	0	-1.63	**	**
27	0.02	0	0	-0.09	0	0	-5.63	**	**
56	0.02	0	0	-0.09	0	0	-4.43	**	**
57	-0.03	0	0	-0.10	0	0	3.39	**	**
86	-0.02	0	0	-0.10	0	0	4.50	**	**
87	-0.07	0	0	-0.10	0	0	1.42	**	**
116	-0.14	0	0	-0.10	0	0	0.71	**	**
117	-0.20	0	0	-0.11	0	0	0.54	**	**
118	-0.24	0	0	-0.12	0	0	0.50	**	**
119	-0.27	0	0	-0.13	0	0	0.47	**	**
120	-0.31	0	0	-0.14	0	0	0.44	**	**
146	-0.01	0	0	-0.10	0	0	7.07	**	**
147	-0.05	0	0	-0.11	0	0	2.00	**	**
148	-0.09	0	0	-0.11	0	0	1.22	**	**
149	-0.13	0	0	-0.12	0	0	0.91	**	**
150	-0.17	0	0	-0.13	0	0	0.76	**	**

Frame with consideration of infill provides a variation of 0.68 to 0.84 times in the Lateral displacement as compared to frame without consideration of infill. There is a considerable reduction in lateral displacement of roof nodes where as rotation of the roof nodes either nullifies or reduces in most of the cases due to introduction of infill.

VIII. CONCLUSION

The following are the main findings of the present study –

- The structural member forces, deformations do vary with the different parameters associated with the infill walls. Such variations are not considered in current codes and thus the guidance for the design of buildings having infill walls is incomplete and specifically for buildings with soft ground storey it is imperative to have design guidelines in detail.
- Infill panels increases the stiffness of the structure and the increase in the opening percentage leads to a decrease on the lateral stiffness of infilled frame. Hence behaviour of building varies with the change in infill arrangements. This indicates that modelling of reinforced concrete frame building without infill wall (panel) or bare frame model may not be appropriate for the analysis.

- iii) The analyses result shows that column forces at the ground storey increases for the presence of infill wall in the upper storeys. But design force magnification factor found to be much lesser than 2.5. This is particularly true for mid-rise open ground storey buildings. It is seen from response spectrum analysis that the magnification factor decreases when the stiffness of infill panels are decreased either by reducing infill strength (thickness and modulus of elasticity) or by providing openings in the infill panels.
- iv) When a bare frame model is subjected to lateral load, mass of each floor acts independently resulting each floor to drift with respect to adjacent floors. Thus the building frame behaves in the flexible manner causing distribution of horizontal shear across floors. In presence of infill wall (panel), the relative drift between adjacent floors is restricted causing mass of the upper floors to act together as a single mass. In such case, the total inertia of the all upper floors causes a significant increase in horizontal shear force at base or in the ground floor columns. Similarly increases the bending moment in the ground floor columns.
- v) From the present results it is found that, lateral displacement is very large in case of bare frame as compare to that of infilled frames. If the effect of infill wall is considered then the deflection has reduced drastically. The presence of walls in upper storeys makes them much stiffer than open ground storey. Hence the upper storey move almost together as a single block and most of the horizontal displacement of the building occurs in the soft ground storey itself.

It is clear from above conclusions that building with soft storey will exhibit poor performance during a strong shaking. But the open ground storey is an important functional requirement of almost all the urban multi-storey buildings and hence cannot be eliminated. Alternative measures need to be adopted for this specific situation. The under-lying principle of any solution to this problem is in i) increasing the stiffness of the ground storey; ii) provide adequate lateral strength in the ground storey. The possible schemes to avoid the vulnerability of open ground storey buildings under earthquake forces can be by providing stiff columns in open ground storey buildings or by providing adjacent infill walls at each corner of soft ground storey buildings.

IX. SCOPE FOR FUTURE WORK

In the present study building models are analyzed only using linear static analysis and response spectrum analysis. Although nonlinear analysis methods are more realistic to linear analysis procedures, it is kept outside the scope of the present study due to time limitation.

The effect of soil-structure interaction may be considered for more realistic analysis. Building models considered in this study are of mid height. For high-rise buildings shift-in-period can be an additional parameter what is not accounted in the present study.

REFERENCES

- [1] Agarwal P. and Shrikhande M. (2006). Earthquake resistant design of structures. PHI Learning Pvt. Ltd., New Delhi.
- [2] Al-Chaar G., Issa M. and Sweeney S. (2002). Behaviour of masonry infilled non-ductile RC frames. *ASCE Journal of Structural Engineering*. 128(8), 1055-1063.
- [3] Arlekar J.N., Jain S. K. and Murty C.V.R (1997). Seismic response of RC frames buildings with soft first storeys. *Proceedings of CBRI golden jubilee conference on natural hazards in urban habitat*, New Delhi.
- [4] Asokan A. (2006). Modelling of Masonry Infill Walls for Nonlinear Static Analysis under Seismic Loads. MS Thesis. Indian Institute of Technology Madras, Chennai.
- [5] Asteris P. G. (2003). Lateral stiffness of brick masonry infilled plane frames. *Journal of Structural Engineering*. 129(8), 1071-1079.
- [6] Chopra A. K. (1973). Earthquake resistance of buildings with a soft first storey. *Earthquake and Structural Dynamics*. 1, 347-355.
- [7] Chug R. (2004). Studies on RC Beams, Columns and Joints for Earthquake Resistant Design. M. Tech Project Report. Indian Institute of Technology Madras, Chennai.
- [8] Crisafulli F. J. (1999). Seismic Behaviour of reinforced concrete structures with masonry infills. Ph.D. Thesis. University of Canterbury, New Zealand.
- [9] Das S. and Nau J.M. (2003). Seismic design aspects of vertically irregular reinforced concrete buildings. *Earthquake Spectra*. 19, 455-477.
- [10] Davis R. (2008). Earthquake Resistant Design of Open Ground Storey RC Framed Buildings. Ph.D. Thesis. Indian Institute of Technology Madras, Chennai.
- [11] Davis R., Menon D. and Prasad A. M. (2008). Evaluation of magnification factors for open ground storey buildings using nonlinear analyses. *The 14th World Conference on Earthquake Engineering*, Beijing, China.
- [12] Deodhar S. V. and Patel A.N. (1998) Ultimate strength of masonry infilled steel frames under horizontal load. *Journal of Structural Engineering*. *Structural Engineering Research Centre*. 24, 237-241.
- [13] Dhansekar M. and Page A.W. (1986). The influence of brick masonry infill properties on the behaviour of infilled frames. *Proceedings of Institution of Civil Engineers*. Part 2 81, 593-605.
- [14] Dolsek M. and Fajfar P. (2001). Soft storey effects in uniformly infilled reinforced concrete frames. *Journal of Earthquake Engineering*. 5(1), 1-12.
- [15] Dominguez Morales M. (2000). Fundamental period of vibration for reinforced concrete buildings. Canada, University of Ottawa (Canada).
- [16] Doudoumis I.N. (2006). Finite element modelling and investigation of the behaviour of elastic infilled frames under monotonic loading. *Engineering Structures*. 29(6), 1004-1024.
- [17] Dorji J. & Thambiratnam D.P.(2009). Modelling and Analysis of Infilled Frame Structures Under Seismic Loads. *The Open Construction and Building Technology Journal*. 3, 119-126.
- [18] Dukuz A. (2000). Behaviour of reinforced concrete frames infilled with brick masonry panels. Canada, University of New Brunswick (Canada).
- [19] ETABS nonlinear version 9.7.1. Extended Three Dimensional Analysis of Building Systems, User's Manual. Computers and Structures, Inc., Berkeley, California, USA.
- [20] Fardis M.N. and Panagiotakos T. B. (1997). Seismic design and response of bare and masonry-infilled concrete buildings. *Journal of Earthquake Engineering*. 1, 475-503.
- [21] Hashmi A. K. and Madan A. (2008). Damage forecast for masonry infilled reinforced concrete framed buildings subjected to earthquakes in India. *Current Science*. 94, 61-73.
- [22] Holmes M. (1961). Steel frames with brick and concrete infilling. *Proceedings of Institution of Civil Engineers*. 19, 473-478.
- [23] IS 456 (2000). Plain and reinforced concrete : Code of practice. Bureau of Indian Standards, New Delhi.
- [24] IS 1893 Part 1 (2002). Criteria for Earthquake Resistant Design of Structures. Bureau of Indian Standards, New Delhi.

- [25] IS 13920 (1993). Seismic detailing of reinforced concrete structures. Bureau of Indian Standards, New Delhi.
- [26] Jagdish R. and Achyutha H. (1985). Finite element simulation of the elastic behaviour of infilled frames with openings. *Computers & Structures*, 23(5), 685-696.
- [27] Kanitkar R. and Kanitkar V. (2004). Seismic performance of conventional multi-storey buildings with open ground storey floors for vehicular parking. *The Indian Concrete Journal*, 78, 99-104.
- [28] Kaushik H. B. (2006). Evaluation of strengthening options for masonry-infilled RC frames with open first storey. Ph.D. Thesis. Indian Institute of Technology Kanpur.
- [29] Sattar S. and Abbie B. L. (2010). Seismic Performance of Reinforced Concrete Frame Structures with and without Masonry Infill Walls, 9th U.S. National and 10th Canadian Conference on Earthquake Engineering, Toronto, Canada.